



HINDUSTAN BIOTECH

PRODUCT PROFILE



- ◆ Insecticide
- ◆ Weedicide
- ◆ Fungicide
- ◆ PGR
- ◆ Fertilizers





HINDUSTAN BIOTECH

ABOUT COMPANY

HINDUSTAN BIOTECH

He provide the agro-solution to Indian farming community. We are committed to educate the farmer to use crop and pest specific crop protection products judiciously. We are working towards adding new chemistry in the product basket to ensure safer products for users. Our sales and marketing team strategically guides the farmers with the adequate and newly adopted techniques which range from teaching sowing pattern, harvesting pattern and shifting from one crop to another in reference to ongoing weather shifts.



In our operational states such as , U.P., U.K., Haryana, Telangana, Andhra Pradesh , Punjab & Rajasthan. Our brand is sharing shelves with top leading brands among their categories. Our quality products and their attractive packaging is generating repeated purchase from the farmers which is further building their trust on our company.

Mission :

Educate, Evolve and Enhance - Strategy of
HINDUSTAN BIOTECH



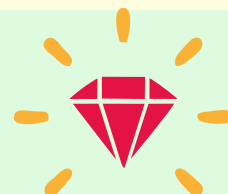
Vision :

To emerge as a leading corporate in delivering agro-solutions and imparting knowledge to end user alongside strengthening manufacturing capabilities, strategic partnerships to superior technology and nurturing innovation across the value chain.



Values :

Trust / Equality / Partnering / Safety / Care





INSECTICIDES PRODUCTS



HIMTOP

CARTAP HYDRO CHLORIDE 4 % GR

HIMTOP is a Broad spectrum systemic insecticide with contact and stomach action for Soil Application.

Crop : Paddy.

Applied on : Whorl Maggot, Sucking & Chewing Pests, Stem Borers, Leaf folder, etc

Dosage Per Ha*: 18-25 Kg per HA

Packing : 5 kg.

*These Doses are only Indicative. Exact Dose may vary according to Crop Stage and Intensity of Pest infestation.

CHARLIE

CHLORANTRANILIPROLE 18.5% W/W SC

CHARLIE insecticide contains chlorantraniliprole, 18.5% w/w. It has a unique mode of action that controls insects that are resistant to other insecticides. Furthermore, it is selective and safe for non-target arthropods and conserves natural parasites, predators and pollinators.

Crop : Sugarcane, Soybean, Maize, Groundnut, Bangal Gram, Rice.

Applied on : Termites, Early Shoot Borer, Top Bore, Pod Borer, Stem Borer, Leaf Folder Spotted Stem Borer, Pink Stem Borer, Fall Armyworm.

*These Doses are only Indicative. Exact Dose may vary according to Crop Stage and Intensity of Pest infestation.



HIJACK

EMAMECTIN BENZOATE 5% SG

HIJACK is biological Insecticide/acricide derived having stomach action

Crop : Cotton, Okara

Applied on : Bollworms, Fruits & shoot borer

Dose : 220 gms per HA in 500 - 700 litre water

Packing : 1 kg, 500 g, 250 g, 100 g.

*These Doses are only Indicative. Exact Dose may vary according to Crop Stage and Intensity of Pest infestation.

INSECTICIDES PRODUCTS

ACEPHATE 95% SG

JUNK is broad spectrum Insecticide.

Crop: Cotton, Paddy.

Applied on : Brown Plant Hopper, Stem Borer, Leaf folder.

Dosage Per Ha*: 250 gm. per acre.

Packing : 1 kg, 500 gm, 250 gm.

*These Doses are only Indicative. Exact Dose may vary according to Crop Stage and Intensity of Pest infestation.

JUNK



FUDON-G

FUDON-G is a systemic Nematicide control all types of insects

Crop: Sugarcane, cotton, Paddy, chilli.

Applied on : Thrips, Aphids, Jassids, Nematicide.

Dosage : 25-33kg per Ha

Packing : 5 kg, 1 kg.

*These Doses are only Indicative. Exact Dose may vary according to Crop Stage and Intensity of Pest infestation.

CARBOFURON 3% CG

NOVALURON 5.25%+EMAMECTIN BENZOATE 0.9% SC **NOVAL**

NOVAL has dual mode of action, Contact and Ingestion. Insects' death by paralysis and aborting moulting.

Crop: Maize, Cabbage, Chilli, Paddy, Redgram

Applied on : Diamond Back Moth, Caterpillar, Fruit Borer, Gram Pod Borer, Stem Borer

Packing : 1 Ltr, 500 ml, 350 ml, 250 ml.

*These Doses are only Indicative. Exact Dose may vary according to Crop Stage and Intensity of Pest infestation.



TARZAN EMAMECTIN BENZOATE 3.0% + THIAMETHOXAM 12.0% WG

TARZAN is a broad-spectrum, dual-action insecticide

Crop: Chilli, Pulses, Tea, Vegetables.

Applied on : Fruit and Shoot Borers, Leaf Folder, Aphids, Whiteflies

Dosage : 60 to 80 gm

Packing : 1 kg. 500 gm.

*These Doses are only Indicative. Exact Dose may vary according to Crop Stage and Intensity of Pest infestation.

INSECTICIDES PRODUCTS

AZOXYSTROBIN 2.5% + THIOPHANATE METHYL 11.25% +
THIAMETHOXAM 25% FS

POLE STAR

POLE STAR is a seed treatment and drenching to protect crops from early-stage diseases and sucking pests.

Crop : Soybean

Applied on : Shoot fly, Fusarium Root Rot, Phytophthora Root Rot, Rhizoctonia seedling blight, Termites, White grub, Pythium seedling blight.

Packing : 1 Ltr, 500 ml, 250 ml, 100 ml.

*These Doses are only Indicative. Exact Dose may vary according to Crop Stage and Intensity of Pest infestation.



SHARK

FIPRONIL 40% + IMIDACLOPRID 40% WG

SHARK provides longer and persistent control of sucking pest. It can control repeated attack of white grub due to its strong affinity with soil particles. Mode of action: contact and systemic.

Crop : Groundnut, Sugarcane and other field and horticulture crop.

Applied on : White grubs and other sucking pests.

Packing : 100 gm, 40 gm.

*These Doses are only Indicative. Exact Dose may vary according to Crop Stage and Intensity of Pest infestation.

EMAMECTIN BENZOATE 1.5% + FIPRONIL 3.5% SC

CENTURY

CENTURY is a potent insecticide formulation designed for the control of a wide range of pest including caterpillars, Thrips, Aphids and Whiteflies.

Crop : Chilli, Cotton, Vegetable and Fruit Crops.

Applied on : Thrips, Fruit borers

Dose :: 200/300 ml per acre in 250 Ltr of water

Packing : 1 Ltr., 500 ml, 250 ml, 100 ml.

*These Doses are only Indicative. Exact Dose may vary according to Crop Stage and Intensity of Pest infestation.



SPIDER PLUS

FIPRONIL 5% SC

SPIDER PLUS is systemic and contact Insecticide. It controls thrips in various crops.

Crop : Sugarcane, Rice, Cabbage & Chilli

Applied on : Early shoot borer, stem borer, leaf folder, aphid, Thrips

Dose : 1-1.5 litre per HA in 500 - 700 litre water.

Packing : 1 Ltr., 500 ml, 250 ml, 100 ml.

*These Doses are only Indicative. Exact Dose may vary according to Crop Stage and Intensity of Pest infestation.

INSECTICIDES PRODUCTS

CHLORPYRIPHOS 50% EC

HITLER-50

HITLER-50 is an Organophosphorous Broad Spectrum Non Systemic insecticide with contact, stomach and vapour action.

Crop : Paddy, Cotton, Termite control Pre & Post building construction

Applied on : Termites, Stem borer, Leaf roller, Bollworm, etc.

Dosage Per Ha*: 1000-1200 ML per HA in 500 - 700 litre water

*These Doses are only Indicative. Exact Dose may vary according to Crop Stage and Intensity of Pest infestation.



HIMTOX

CHLORPYRIPHOS 10% GR

HIMTOX is a insecticides. It is used for controlling of chewing and sucking insects in various crops.

Crop : Sugarcane, Paddy

Applied on : Stem borer, leaf folder, whorl maggot, shoot borer & root borer.

Packing : 5 kg, 1 kg.

*These Doses are only Indicative. Exact Dose may vary according to Crop Stage and Intensity of Pest infestation.

CHLORPYRIPHOS 50% + CYPERMETHRIN 5% EC

MAXX 505

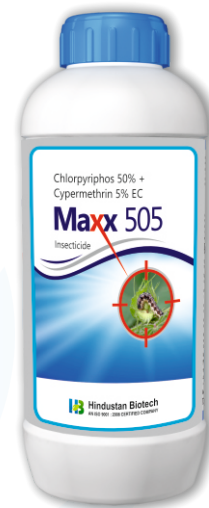
MAXX 505 is an insecticide that is commonly used to control a wide range of insect pests in agriculture, horticulture, and forestry.

Crop : Cotton and paddy

Applied on : Aphid, jassid, Thrips, Pink bollworm & White Fly.

Packing : 5 Ltr, 1 Ltr, 500 ml, 250 ml, 100 ml,

*These Doses are only Indicative. Exact Dose may vary according to Crop Stage and Intensity of Pest infestation.



SHOOT-25

CYPERMETHRIN 25% EC

SHOOT-25 is a synthetic pyrethroid Non Systemic insecticide with contact and stomach action.

Crop : Cotton, Vegetables, etc.

Applied on : Bollworm, Jassid, Thrip, Shoot & Fruit borer, etc.

Dosage : 250-400 ml per HA in 500-700 Ltr. of water.

Packing : 5 Ltr, 1 Ltr, 500ml, 250ml, 100ml.

*These Doses are only Indicative. Exact Dose may vary according to Crop Stage and Intensity of Pest infestation.

INSECTICIDES PRODUCTS

THIAMETHOXAM 0.9% + FIPRONIL 0.2% GR

HILTON

HILTON is combines systemic (Thiamethoxam) and contact (Fipronil) action to protect roots, improve plant vigor, and provide long-lasting control

Crop : Groundnut

Applied on : White grub, Termite

Dosage Per Ha*: 4.8 - 6 kg / acre

*These Doses are only Indicative. Exact Dose may vary according to Crop Stage and Intensity of Pest infestation.



PROMIS

IMIDACLOPRID 17.8% SL

PROMIS is a Broad Spectrum systemic and contact action insecticide.

Crop : Cotton, Sugarcane, Paddy, Okara, Sunflower

Applied on : Aphid, White Fly, Jassid, Termite, Thrips

Packing : 1 Ltr, 500 ml, 250 ml, 100 ml.

*These Doses are only Indicative. Exact Dose may vary according to Crop Stage and Intensity of Pest infestation.

IMIDACLOPRID 30.5% SC

PROMIS PLUS

PROMIS PLUS is a systemic insecticide used to control a wide range of pests, including sucking insects, termites, and some chewing insects. |

Crop : Rice, Cotton

Applied on : Brown Plant hopper, Aphid, Jassid, Thrips.

Packing : 1 Ltr, 500 ml, 250 ml, 100 ml

*These Doses are only Indicative. Exact Dose may vary according to Crop Stage and Intensity of Pest infestation.



IMAGINE

IMIDACLOPRID 70% WG

IMAGINE is a Broad Spectrum systemic and contact action insecticide.

Crop : Cotton, Paddy, Cucumber, & Okara

Applied on : Aphid, Jassid, Thrips & Brown/White backed Plant hoppers Insects

Dosage Per Ha*: 30-35 gm per Ha in 500 - 700 litre water

*These Doses are only Indicative. Exact Dose may vary according to Crop Stage and Intensity of Pest infestation.

INSECTICIDES PRODUCTS

CARTAP HYDROCHLORIDE 50% SP

HIMTOP-50

HIMTOP-50 gives effective control of insects through its contact, systemic and stomach action. It controls all stages of insect e.g. eggs, larvae and adults.

Crop : Cotton, Rice, etc

Applied on : Stem Borer, Boll worm, Leaf folder, Green Leaf hopper, Hispa,

Packing : 1 kg, 500g, 250g, 100g.

*These Doses are only Indicative. Exact Dose may vary according to Crop Stage and Intensity of Pest infestation.



PROPER PROFENOFOS 40% + CYPERMETHRIN 4% EC

PROPER is a Broad spectrum systemic insecticide with contact and stomach action.

Crop : Cotton.

Applied on : Boll worms Insects.

Packing : 1 Ltr., 500 ml, 250 ml, 100 ml.

*These Doses are only Indicative. Exact Dose may vary according to Crop Stage and Intensity of Pest infestation.

LAMBDAHALOTHHRIN 4.9% CS

KRANTI

KRANTI is an Insecticide in the form of Capsule suspension

Crop : Cotton, Paddy, Tomato, Okara, Brinjal

Applied on : Bollworm, Leaf Folder, Fruit borer, Thrips

Dose : 250-500 - 700 ml per HA in 500 - 700 Litre water.

Packing : 1 Ltr., 500 ml, 250 ml, 100 ml.

*These Doses are only Indicative. Exact Dose may vary according to Crop Stage and Intensity of Pest infestation.



HIKILL

LAMBDA CYHALOTHHRIN 5% EC

HIKILL is a contact and systemic insecticide.

Crop : Cotton, Paddy, Brinjal, Onion, Garlic, Mango.

Applied on : Bollworm, Jassids, Thrips, Fruit/ Shoot Borer etc

Dosage Per Ha*: 300 - 500 ml in 500 - 700 litre of water

Packing : 5 Ltr, 1Ltr, 500ml, 250ml, 100ml.

*These Doses are only Indicative. Exact Dose may vary according to Crop Stage and Intensity of Pest infestation.

INSECTICIDES PRODUCTS

PYRIPROXYFEN 10% EC

LION

LION is a systemic insect growth regulator that suppresses embryogenesis, and inhibits metamorphosis and reproduction in insects.

Crop : Cotton, Chilli.

Applied on : Aphid, White Fly, Jassid.

Packing : 1 Ltr., 500 ml, 250 ml.

*These Doses are only Indicative. Exact Dose may vary according to Crop Stage and Intensity of Pest infestation.



NAVTARA

THIAMETHOXAM 75% WG

NAVTARA is a Broad Spectrum Systemic insecticide with Contact and Stomach action

Crop: Paddy, Soyabean, Cotton, Vegetables.

Applied on : Aphids, Whiteflies, Leafhoppers, Thrips and Beetles.

Packing : 1 kg, 500 g, 250 g, 100 g.

*These Doses are only Indicative. Exact Dose may vary according to Crop Stage and Intensity of Pest infestation.

THIAMETHOXAM 30% FS

HIMTARA

HIMTARA provides a wide range of early season sucking and chewing pests. It is used to treat the seeds.

Crop : Cotton, Wheat, Soybeans, Corn, Sorghum.

Applied on : Aphids, Wireworms, Flea beetles, Leaf miners.

Packing : 1 Ltr, 500 ml, 250 ml, 100 ml

*These Doses are only Indicative. Exact Dose may vary according to Crop Stage and Intensity of Pest infestation.



VITARA

THIAMETHOXAM 25% WG

VITARA is a broad-spectrum systemic insecticide used for pest control in various crops. It's known for its fast-acting and long-lasting protection against sucking and chewing insects.

Crop: Rice, Cotton, Okra, Mango, Wheat, Mustard, Tomato, Brinjal, Tea, Potato, Citrus.

Applied on : Aphids, Thrips, Whiteflies, Leafhoppers, and certain soil-dwelling pests.

Packing : 1 kg, 500 g, 250 g, 100 g.

*These Doses are only Indicative. Exact Dose may vary according to Crop Stage and Intensity of Pest infestation.

INSECTICIDES PRODUCTS

THIAMETHOXAM 12.6% + LAMBDA CYHALOTHRIN 9.5% ZC **RDX**

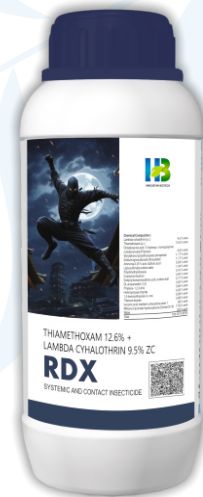
RDX is broad-spectrum systemic insecticide, that interacts through ingestion, contact or as fumigant. It affects the central nervous system by blocking nicotinic acetyl- choline receptor causing paralysis. Lambda cyhalothrin is contact and stomach mode insecticide, that is axonic excitotoxic, so it disrupts the nervous system of the insect and hence causes rapid knock-down effect.

Crop: Paddy, Groundnut and other major crops

Applied on : Sucking pest, thrips, Stem borer, Leaf folder, tea mosquito bug and semilooper,

Packing: 1 Ltr, 500 ml, 250 ml, 100 ml.

*These Doses are only Indicative. Exact Dose may vary according to Crop Stage and Intensity of Pest infestation.



HUKA FIPRONIL 4% + THIAMETHOXAM 4% SC

HUKA is a broad-spectrum insecticide used to control a wide range of insect pests on various crops.

Crop: Rice

Applied on: Brown Plant Hopper, Green Leaf Hopper, White Backed Plant Hopper.

Packing: 1Ltr, 500 ml, 250 ml.

*These Doses are only Indicative. Exact Dose may vary according to Crop Stage and Intensity of Pest infestation.

CHLORANTRANILIPROLE 9.3% + LAMBDCYHALOTHRIN 4.6% ZC **ALLIGO**

ALLIGO is a broad-spectrum, dual-action insecticide (systemic + contact) designed for fast knockdown and long-lasting control of lepidopteran pests (caterpillars) and select sucking pests.

Crop: Cotton, Brinjal, Okra, Paddy, Soybean, Cabbage, Groundnut, Blackgram.

Applied on : Shoot, fruit borer, Jassids, Stem borer, Leaf folder & Green leaf hopper, Spodoptera, Diamondback Moth, Leaf miner, Leaf feeder, Thrips.

Packing: 1 Ltr, 500 ml, 250 ml, 100 ml

*These Doses are only Indicative. Exact Dose may vary according to Crop Stage and Intensity of Pest infestation.



PRO MAX DINOTEFURAN 15%+PYMETROZINE 45% WG

PRO MAX dual mode of action in Brown Plant Hopper, Green leaf Hopper, White Backed Plant Hooper helps protect the rice crop from the devastating pest BPH which develops high resistance against all agrochemicals.

Crop: Paddy,

Applied on : BPH, Green leaf Hopper, WBPH, Rice ear head bug

Dosage Per Ha* : 133.2 gm/ acre

Packing: 133.2 g, 333 g, 666 g,

*These Doses are only Indicative. Exact Dose may vary according to Crop Stage and Intensity of Pest infestation.

INSECTICIDES PRODUCTS

NOVALURON 5.25% + INDOXACARB 4.5% SC **HARMONY**

HARMONY is an innovative crop protection product with a dual mode of action. He attacks the insect nervous system by preventing sodium ions from entering nerve cells.

Crop: Tomato, Rice, Black Gram, Chilli, Soybean, Red Gram, Chick Pea, Groundnut.

Applied on : Thelicoverpa, Spodoptera, Fall armyworm, Cut Worm, Pod borers, DBM, Stem borers, Bollworms, Leaf roller.

Packing: 1 Ltr, 500 ml, 250 ml, 100 ml

*These Doses are only Indicative. Exact Dose may vary according to Crop Stage and Intensity of Pest infestation.



VOLUME CHLORANTRANILIPROLE 8.8% + THIAMETHOXAM 17.5% SC

VOLUME is a broad-spectrum insecticide used to control a wide range of insect pests in crops like tomato and rice.

Crop: Tomato, Paddy (Nursery).

Applied on : Fruit borer, Leaf miner, whitefly, Stem borer, Leaf folder, Green Leaf Hopper.

Packing: 1 Ltr, 500 ml, 250 ml, 100 ml.

*These Doses are only Indicative. Exact Dose may vary according to Crop Stage and Intensity of Pest infestation.

DELTAMETHRIN 11% EC

OSSIS

OSSIS is a high-concentration, non-systemic synthetic pyrethroid insecticide used to control a broad spectrum of chewing and sucking insects in agriculture.

Crop: Cotton, Tomato, okra, Rice, Chilli.

Applied on : BollWorm, Fruit Borer, Leaf folder, Stem borer, whorl maggot, Green Leaf Hopper

Packing: 1 Ltr, 500 ml, 250 ml, 100 ml

*These Doses are only Indicative. Exact Dose may vary according to Crop Stage and Intensity of Pest infestation.



FIGHTER

ALPHACYPERMETHRIN 10% SC

FIGHTER is a high performance, residual insecticide that provides control of mosquitoes, houseflies and cockroaches for longer duration. GERMAN FIGHTER used for control coleopterous, hemipterous, and lepidopterous pests.

Crop: Cereals, coffee, cotton, fruit, rape, rice, soybeans, and vegetables.

Applied on: Bollworm

Packing: 1 Ltr, 500 ml, 250 ml, 100 ml.

*These Doses are only Indicative. Exact Dose may vary according to Crop Stage and Intensity of Pest infestation.

INSECTICIDES PRODUCTS

THIAMETHOXAM 1.0% W/W +
CHLORANTRANILIPROLE 0.5% W/W GR

HUKURA

HUKURA is a broad-spectrum, systemic insecticide, which means it is absorbed quickly by plants and transported to all of its parts, including pollen, where it acts to deter insect feeding.

Crop : Paddy Rice

Applied on : Rice Leaf Folder and Stem Borer.

Packing : 5 KG.

*These Doses are only Indicative. Exact Dose may vary according to Crop Stage and Intensity of Pest infestation.





FUNGICIDE PRODUCTS



HOPCIN THIOPHANATE METHYL 70% WP

HOPCIN is a systemic Fungicide of Triazole group with fast curing and protecting actions.

Crop : Paddy, Fruits, Groundnut, etc

Applied on : Sheath blight, brown spot, Powdery Mildew, Tikka Leaf spot & Blast etc

Dosage : 400-600 gm Per Acre

Packing : 500 gm, 250 gm.

*These Doses are only Indicative. Exact Dose may vary according to Crop Stage and Intensity of Pest infestation.

CARBENDAZIM 12% + MANCOZEB 63% WP **CARMAN**

CARMAN is a broad spectrum systemic and contact Fungicide with Strong and curative action.

Crop : Cotton, Paddy, Tomato, Mango, Chilli,

Applied on : For Blast of Paddy crop, Brown leaf spot.

Dosage Per Ha*: 750 gm in 750 litre water

Packing : 500 gm, 250 gm.

*These Doses are only Indicative. Exact Dose may vary according to Crop Stage and Intensity of Pest infestation.



HIND-45 MANCOZEB 75% WP

HIND-45 is a Systemic and contact Fungicide with Strong and curative action.

Crop : Chillies, Cucurbits, Wheat, Maize, Paddy, etc.

Fungal Diseases : Fruitspot, Leafspot, Dampingoff, Rootrot

Packing : 1 kg, 500 gm.

*These Doses are only Indicative. Exact Dose may vary according to Crop Stage and Intensity of Pest infestation.

FUNGICIDE PRODUCTS

METALAXYL 8% + MANCOZEB 64% WP

EXCEL

EXCEL is a Systemic and contact Fungicide with Strong and curative action.

Crop : Potato, Grapes, Pearl millet

Applied on : Downy mildew, late blight.

Packing : 1 kg, 500 gm, 250 g, 100 g,

*These Doses are only Indicative. Exact Dose may vary according to Crop Stage and Intensity of Pest infestation.



TEJAS TEBUCONAZOLE 10% + SULPHUR 65% WG

TEJAS is a suspension Concentrate majorly used for the control of Powdery mildew of grapes and mango. The fungicide is also used to control plant diseases in cereals and fruits, including citrus, bananas, strawberries, pineapples, and pomes. It exhibits both protecting and curative action.

Dosage : 0.1 % or 100 ml in 100 Liters of water

Packing : 1 kg, 500 gm,

*These Doses are only Indicative. Exact Dose may vary according to Crop Stage and Intensity of Pest infestation..

TEBUCONAZOLE 6.7% + CAPTAN 26.9% SC DELIGHT

DELIGHT is a broad-spectrum fungicide used to control various fungal diseases in crops like Powdery Mildew, Alternaria Leaf spot/blight and scab on Apple and Powdery Mildew and Anthracnose disease on Chilli. It works through both contact and systemic action, providing dual-action protection against multiple fungal pathogens.

Crop: Apple, Chilli

Fungal Diseases: fungal sterol biosynthesis, halting fungal growth, and also has a protective and curative effect.

Dosage Per Ha*: 2-2.5 ml per Litres of water (Plz refer Leaflet for details).

Packing: 1 Ltr, 500 ml, 250 ml, 100 ml.

*These Doses are only Indicative. Exact Dose may vary according to Crop Stage and Intensity of Pest infestation.



OSCAR TEBUCONAZOLE 38.39% SC

OSCAR is a systemic fungicide recommended for use as a foliar spray for the control of alternaria leaf spot disease in cabbage as well as yellow rust and powdery mildew diseases in wheat.

Crop : Wheat, Paddy, Maize, Chilli, Tomato, Ground Nut, Soybean, Fruits, Vegetables, and Cereals.

Applied on : Leaf Spot, Blight, Powdery Mildew, and fungal diseases in crops.

Packing : 1 Ltr, 500 ml.

*These Doses are only Indicative. Exact Dose may vary according to Crop Stage and Intensity of Pest infestation.

FUNGICIDE PRODUCTS

THIFLUZAMIDE 24% SC

PLUTO

PLUTO belongs to the Carboxinilide group. It is a systemic fungicide with protective and curative action.

Crop : Paddy, Tomato, Potato

Applied on : Black scurf, Sheath blight, early blight

Packing : 1 ltr, 500 ml.

*These Doses are only Indicative. Exact Dose may vary according to Crop Stage and Intensity of Pest infestation.



LUDO AZOXYSTROBIN 11%+TEBUCONAZOLE 18.3% SC

LUDO is a world class fungicide containing Azoxystrobin 11% & Tebuconazole 18.3% w/w SC. It inhibits respiration and ergosterol synthesis of the fungus. It is a powerful combination of Triazole and Strobilurin chemistries & it exhibits Systemic and Translaminar movement and disperse rapidly in plant system.

Crop : Paddy, Grape, Potato, Wheat, Tomato, Onion, Chilly, Apple

Applied on : Blast of paddy, Sheath Blight, Anthracnose, Die Back, Purple Blotch

Packing : 1 ltr, 500 ml, 250 ml

*These Doses are only Indicative. Exact Dose may vary according to Crop Stage and Intensity of Pest infestation..

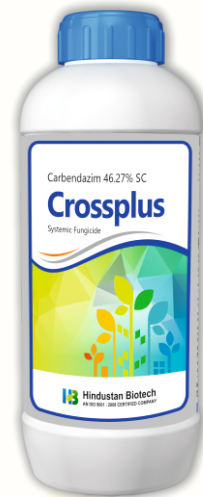
CARBENDAZIM 46.27% SC

CROSSPLUS

CROSSPLUS is a suspension Concentrate majorly used for the control of Powdery mildew of grapes and mango. The fungicide is also used to control plant diseases in cereals and fruits, including citrus, bananas, strawberries, pineapples, and pomes. It exhibits both protecting and curative action.

Dosage : 0.1 % or 100 ml in 100 Liters of water

*These Doses are only Indicative. Exact Dose may vary according to Crop Stage and Intensity of Pest infestation.



VALCIN

VALCIN is an antibiotic fungicide which controls Sheath blight disease of Rice very effectively. It acts on hyphae and destroys the fungus by its contact action and controls the spread of diseases. It remains effective for a long time even after rain.

Crop : Rice

Fungal Diseases : Sheath blight

Dosage : 2000 ml per HA in required amount of water.

Packing : 1 Ltr, 500 gm.

*These Doses are only Indicative. Exact Dose may vary according to Crop Stage and Intensity of Pest infestation.

VALIDAMYCIN 3% L

FUNGICIDE PRODUCTS

AZOXYSTROBIN 11.5% + MANCOZEB 30.0% WP **UNITOP**

UNITOP is a contact as well as systemic broadspectrum fungicide with protective action. It is recommended to be applied at early appearance of disease or prophylactically.

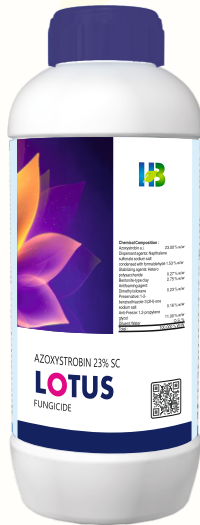
Crop : Paddy, Groundnut, Tomato , Cotton

Applied on : Early & Late blight

Dose : 350 gm/ acre .

Packing : 1 kg, 500 gm

*These Doses are only Indicative. Exact Dose may vary according to Crop Stage and Intensity of Pest infestation.



LOTUS

AZOXYSTROBIN 23% SC

LOTUS is fungicide with protectant, curative, eradicator, translaminar and systemic properties. It can improve the resilience but with high yield though under bad climate. It can extend the harvest time as its anti-aging is good.

Crop : Paddy, Grape, Potato, Tomato, Onion, Chilli, Cotton

Applied on : Downy mildew, Powdery mildew, fruit rot, Leaf spot, pod blight, Anthracnose, Late blight

Packing : 1 ltr, 500 ml

*These Doses are only Indicative. Exact Dose may vary according to Crop Stage and Intensity of Pest infestation..

AZOXYSTROBIN 4.8% + CHLOROTHALONIL 40.0% SC

TITAN

TITAN is a broad-spectrum combination fungicide used for systemic and contact control of fungal diseases like downy mildew, powdery mildew and leaf spots.

Crop : Watermelon, Cucumber, Cauliflower.

Applied on : Leaf Spot, Downy Mildew, Powdery Mildew

Dose : 33 ml/litre water

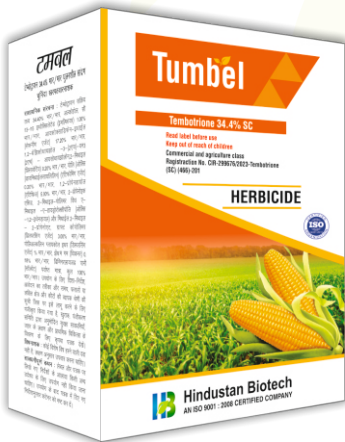
Packing : 1 kg, 500 gm

*These Doses are only Indicative. Exact Dose may vary according to Crop Stage and Intensity of Pest infestation.





HERBICIDES PRODUCTS



TUMBEL

TEMBOTRIONE 34.4% W/W SC

TUMBEL is a broad spectrum post emergence herbicide recommended for use along with surfactant for control of broad leaf and grassy weeds in corn.

Crop : Maize , sugarcane , Bajra

Applied on: Broadleaf & grassy weeds

Packing : 57.5ml, 115ml, 230ml.

*These Doses are only Indicative. Exact Dose may vary according to Crop Stage and Intensity of Pest infestation.

BISPYRIBAC SODIUM 10% SC

NANO GOLD

NANO GOLD is a broad spectrum post emergent herbicide containing Bispyribac-sodium as an active ingredient. It effectively controls most of weed species infesting rice crop, both in nurseries and main field.

Crop : Rice

Applied on : Echinochloa crusgalli, Echinochloa colonum, Ischaemum rugosum, Cyperus difformis, Cyperus iria, Fimbristylis milliacea, Eclipta alba, Ludwigia etc.

Packing : 1 Ltr, 500 ml, 250 ml, 100 ml

*These Doses are only Indicative. Exact Dose may vary according to Crop Stage and Intensity of Pest infestation.



RUN-71 AMMONIUM SALT OF GLYPHOSATE 71% SG

RUN-71 is a non-selective systemic herbicide of Organophosphorus (Glycine and phosphonates) group, which inhibits the EPSP synthesis in weed plants. It controls very effectively both annual and perennial weeds.

Crop : Non crop area

Applied on : Grassy & Broad leaved weeds.

Packing : 100 gm.

*These Doses are only Indicative. Exact Dose may vary according to Crop Stage and Intensity of Pest infestation.

HERBICIDES PRODUCTS

METSULFURON METHYL 20% WP

HIGRIP

HIGRIP is a selective post emergence herbicide with broad spectrum activity. Used for one shot control of wide range of broad leaf weeds.

Crop: Generally for Wheat

Packing: 8 gm. + 200 ml.

*These Doses are only Indicative. Exact Dose may vary according to Crop Stage and Intensity of Pest infestation.



SPEED 54

GLYPHOSATE 41% SL

SPEED 54 is a non-selective systemic herbicide of Organophosphorus (Glycine and phosphonates) group, which inhibits the EPSP synthesis in weed plants. It controls very effectively both annual and perennial weeds.

Crop: Non crop area

Applied on : Grassy & Broad leaved weeds.

Packing: 5 Ltr, 1 Ltr, 500 ml.

*These Doses are only Indicative. Exact Dose may vary according to Crop Stage and Intensity of Pest infestation.

PENDIMETHALIN 38.7% CS

STUMP-X

STUMP-X is a broad-spectrum, selective pre-emergent and pre-plant incorporation herbicide. It is based on advanced technology by which the chemical doesn't evaporate at increased temperature.

Crop: Soybean, Chilli, Cotton.

Applied on : White goosefoot, green amaranth, buffalo grass, crowfoot grass, cane grass, asthma plant, common purslane, giant pigweed, signal grass.

Packing : 700 ml, 3.5 Ltr,

*These Doses are only Indicative. Exact Dose may vary according to Crop Stage and Intensity of Pest infestation.



STUMP

PENDIMETHALIN 30% EC

STUMP is an herbicide of the dinitroaniline class used in pre emergence and post emergence applications to control annual grasses and certain broadleaf weeds. It inhibits cell division and cell elongation. Microtubule assembly inhibition.

Crop: Cotton, Soyabean, Paddy, Wheat, etc

Applied on: Echinochloa, Euphorbia, Wild Amaranthus, Phyllanthus, Paspalum Phalaris, Carnoplus, Poa, Chenopodium, Portuluca, Anagallis, Wild Rice, Echinochloa, Cyperus, Eclipta

Packing: 1 Ltr, 500 ml.

*These Doses are only Indicative. Exact Dose may vary according to Crop Stage and Intensity of Pest infestation.

HERBICIDES PRODUCTS

PARAQUATE DICHLORIDE 24% SL

QUICK

QUICK is broad spectrum, non selective & contact herbicide which effectively controls broadleaved weeds & grasses. During photosynthesis superoxide generated, which damages cell membranes and cytoplasm.

Crop: Potato, Cotton, Rubber, Wheat, Rice, Apple, Grapes

Applied on : Grassy & Broad leaved weeds.

Packing : 5 Ltr, 1 Ltr, 500 ml, 250 ml.

*These Doses are only Indicative. Exact Dose may vary according to Crop Stage and Intensity of Pest infestation.



RACE PLUS

PRETILACHLOR 37% EW

RACE PLUS is belongs to chloroacetamide group. It is selective broad spectrum pre-emergence herbicide for transplanted rice. PARMANU SUPER inhibits growth & reduces cell division.

Crop : Transplanted Paddy

Applied on : Echinochloa crusgalli, Echinochloa colonum, Cyperus difformis, Cyperus iria Digitaria sanguinalis, Fimbristylis miliacea, Eclipta alba, Ludwigia parviflora, Monochoria vaginalis

Packing : 300 ml, 600 ml, 3 Ltr

*These Doses are only Indicative. Exact Dose may vary according to Crop Stage and Intensity of Pest infestation.

PRETILACHLOR 50% EC

RACE

RACE is a pre-emergence, broad-spectrum herbicide of Chloroacetamide group which controls all type of weeds in rice. Parmanu absorbed primarily by the germinating shoots, and secondarily by the roots, with trans-location throughout the plant, giving higher concentrations in vegetative parts than in reproductive parts.

Crop : Generally for Transplanted Paddy

Applied on : Panicum repens, Echinochloa crusgalli, Eclipta Alba, etc

Packing : 5 Ltr, 1 Ltr, 500 ml.

*These Doses are only Indicative. Exact Dose may vary according to Crop Stage and Intensity of Pest infestation.



VIP SUPER

FENOXAPROP-P-ETHYL 9.3% EC

VIP SUPER is a selective herbicide used to control grassy weeds in various crops, including soybean, rice, cotton, black gram, and onion.

Crop: Soyabean, Rice, cotton, Black gram, Onion, Groundnut

Applied on : Echinochloa colonum, Echinochloa crusagalli, Crab grass: Digitaria sp. Crow's foot grass: Eleusine indica Setaria sp. Bracharia sp., Echinochloa sp., Eleusine indica, Eragrostis minor, Echinochloa Colonum.

Packing : 1 Ltr, 500 ml, 250 ml.

*These Doses are only Indicative. Exact Dose may vary according to Crop Stage and Intensity of Pest infestation.

HERBICIDES PRODUCTS

OXYFLOURFEN 23.5% EC

OXYGOAL

OXYGOAL is selective, pre emergence, contact herbicide, absorbed rapidly by the foliage (especially the shoots) than by the roots with very little translocation. Controls annual broad leaved weeds and grasses.

Crop : Potato, Tea, Rice, Groundnut, Onion and Mentha.

Applied on: Echinochloa spp, Cyperus difformis, Fimbriistylis, Miliacca, Eclipta alba, Marselia spp, Ludwigia perennis

Packing : 100 ml, 250 ml, 500 ml, 1 litre

*These Doses are only Indicative. Exact Dose may vary according to Crop Stage and Intensity of Pest infestation.



MUNAAR

METRIBUZIN 70% WP

MUNAAR is a selective, systemic and contact herbicide of Triazinone group, which inhibits the Photosynthesis at Photo-system II. It acts through the roots and leaves and therefore, can be used for both pre and post emergence applications. It controls both narrow and broad leaf weeds.

Crop : Sugarcane, Potato, Tomato, Wheat, Soyabean, etc.

Applied on : Echinochloa spp, Euphorbia Spp, Portulaca spp, etc

Packing : 100 gm.

*These Doses are only Indicative. Exact Dose may vary according to Crop Stage and Intensity of Pest infestation.

ATRAZINE 50% WP

HIZIN-50

HIZIN-50 is a selective systemic pre and post emergence herbicide used for control of annual broad leaved weeds and grasses.

Crop : Maize, Bajra, Sugarcane, Potato, etc

Packing : 500 gm.

*These Doses are only Indicative. Exact Dose may vary according to Crop Stage and Intensity of Pest infestation.



MAHI CLODINOFOP PROPARGYL 9% + METRIBUZIN 20% WP

MAHI Safe and highly selective to wheat crop Suitable for most of the crop rotation systems Wide spectrum weed control: grasses and broadleaf weeds

Crop : Wheat

Applied on : Phalaris minor, Chenopodium Spp., Medicago denticulata, Coronopus dedymus, Rumex spp. Melilotus alba, Anagallis arvensis.

Packing : 160 g.

*These Doses are only Indicative. Exact Dose may vary according to Crop Stage and Intensity of Pest infestation.

HERBICIDES PRODUCTS

2,4-D ETHYL ESTER 38% EC

KARGIL-38

KARGIL-38 acts as a systemic herbicide, absorbed through leaves and roots and translocated within the plant. It mimics the plant growth hormone auxin, causing uncontrolled cell division and distortion in broadleaf weeds, leading to their death while leaving grasses unaffected.

Crop : Cereals, pulses, sugarcane, maize, and other field crops

Applied on: Broadleaf weeds, Cyperus sp., and other terrestrial & aquatic broadleaf species

Packing : 100 ml, 250 ml, 500 ml, 1 litre

*These Doses are only Indicative. Exact Dose may vary according to Crop Stage and Intensity of Pest infestation.



KARGIL-58

2,4-D AMINE SALT 58% SL

KARGIL-58 is a selective herbicide used to control broadleaf weeds in various crops and non-crop areas.

Crop : Maize, Wheat, Potato, Sugarcane, Aquatic Weeds

Applied on : Chenopodium Album, Fumaria Parviflora, Melilotus Alba, Vicia Sative, Asphodelus Tenuifolium

Packing : 1 Litre, 400 ml.

*These Doses are only Indicative. Exact Dose may vary according to Crop Stage and Intensity of Pest infestation.

PGR PRODUCTS

PACLOBUTRAZOLE 40% SC

RADIANT

RADIANT is formulated with Paclobutrazol 40% SC, is a plant growth regulator designed to stimulate plant growth and optimize crop yield. Unlike traditional fertilizers, it achieves this by regulating plant hormones to encourage healthier growth and increased productivity

Crop: It can be applied in various agricultural and horticultural Crops.

Applied on : Increase fruit production in orchards, resulting in higher yields, Greenhouse Crops, Turfgrass Management, Enhance the appearance and health of ornamental flowers and shrubs.

Packing: 100 ml.

*These Doses are only Indicative. Exact Dose may vary according to Crop Stage and Intensity of Pest infestation.



TUMBEL

TEMBOTRIONE 34.4% W/W SC

TUMBEL is a broad spectrum post emergence herbicide recommended for use along with surfactant for control of broad leaf and grassy weeds in corn.

Crop: Maize , sugarcane , Bajra

Applied on: Broadleaf & grassy weeds

Packing: 57.5ml, 115ml, 230ml.

*These Doses are only Indicative. Exact Dose may vary according to Crop Stage and Intensity of Pest infestation.

GIBBERELIC ACID 0.001% L

TAKAT

TAKAT is a metabolic enhancer that contains Gibberellic Acid 0.001%L which stimulate & regulate the plant growth. It increase plant growth and crop yield. It improves plant health and sustained productivity. It enhances photosynthesis and plant metabolism.

Crop: All field crops, Vegetabales , Orchard

Applied on : Increase the growth and number of flowers to prevent pre-dropping of fruits & flowers and to enhance overall Growth of the plants.

Packing: 1 Ltr, 500 ml, 250 ml, 100 ml.

*These Doses are only Indicative. Exact Dose may vary according to Crop Stage and Intensity of Pest infestation.



ASTOR

ASTOR is a unique formulation with unique biological properties. It acts for soil conditioning and nourishment there by increasing the yield in the crop. It contains organically derived trace elements and other nutrients.

Crop: All field crops, Vegetables , Orchard

Applied on : Roots developments, Stress management ,Plant growth, Maximize plant yield and Quality of produce

Packing: 4 Kg.

*These Doses are only Indicative. Exact Dose may vary according to Crop Stage and Intensity of Pest infestation.

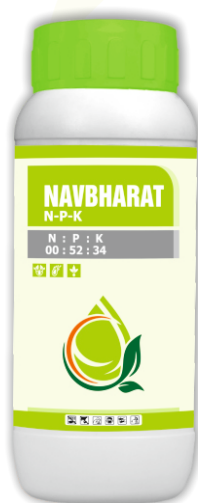
PGR PRODUCTS

NAVBHARAT NPK 19:19:19

NAVBHARAT NPK 19:19:19 is a balanced, 100% water-soluble, all-purpose fertilizer providing equal parts Nitrogen, Phosphorus, and Potassium. It stimulates rapid vegetative growth, strengthens roots, enhances nutrient uptake, and promotes flowering/fruitletting. It is ideal for foliage spray, drip irrigation, or soil drenching on various crops and houseplants

Packing: 1 Ltr, 500 ml, 250 ml, 100 ml.

*These Doses are only Indicative. Exact Dose may vary according to Crop Stage and Intensity of Pest infestation.



NAVBHARAT NPK 00:52:34

NAVBHARAT NPK 00:52:34 (Mono Potassium Phosphate) is a high-phosphorus and high-potassium, nitrogen-free fertilizer used to boost root development, enhance flower formation, and improve fruit quality. It is highly water-soluble, making it ideal for fertigation and foliar spray to increase yields in grapes, tomatoes, and pomegranates.

Packing: 1 Ltr, 500 ml, 250 ml, 100 ml.

*These Doses are only Indicative. Exact Dose may vary according to Crop Stage and Intensity of Pest infestation.

NAVBHARAT NPK 13:00:35

NAVBHARAT NPK 13:00:35 (Potassium Nitrate/NOP) is a specialized, 100% water-soluble fertilizer with high Potassium and Nitrogen content, specifically designed for fertigation and foliar applications. It is particularly effective during the later stages of crop development, such as post-bloom, fruit maturation, and ripening, to enhance fruit quality, size, and weight

Packing: 1 Ltr, 500 ml, 250 ml, 100 ml.

*These Doses are only Indicative. Exact Dose may vary according to Crop Stage and Intensity of Pest infestation.



NAVBHARAT NPK 00:00:50

NAVBHARAT NPK 00:00:50 (Potassium Sulphate) is a highly soluble fertilizer, often with 17.5% sulphur, designed for foliar spray and fertigation. It boosts potassium levels to improve fruit size, weight, quality, and resistance to pests and environmental stress. It is widely used during flowering, fruit setting, and maturity stages.

Packing: 1 Ltr, 500 ml, 250 ml, 100 ml.

*These Doses are only Indicative. Exact Dose may vary according to Crop Stage and Intensity of Pest infestation.

PGR PRODUCTS

NAVBHARAT NPK 11:11:8

NAVBHARAT NPK 11:11:8 often fortified with Zinc and Boron, is a balanced, fast-acting fertilizer used to promote robust growth, root development, and flowering in crops. It is applied via foliar spray or drip irrigation to boost yields, improve fruit quality, and correct nutrient deficiencies, ideal for vegetables, fruits, and cereals.

Packing: 1 Ltr, 500 ml, 250 ml, 100 ml.

*These Doses are only Indicative. Exact Dose may vary according to Crop Stage and Intensity of Pest infestation.



ZINCTAC

NATURAL LIQUID BIO FERTILIZER

Recommended Crops : Paddy, Wheat, Sugarcane, Cotton, Soybean, fruits, vegetables and all crops.

Applicaiton-seed Treatment : Take Zinc-500 4-6 ml per Kg seed or 50-100ml to one acre seed.

Seedling/Sett dipping : Mix 100-200 ml of Zinc-500 in 20-30 Liters of water.

Soil Application : For one acre land use 200 ml to 500 ml.

Drip Irrigation : 500 ml of per acre of land.

Packing : 1 Ltr, 500 ml, 250 ml, 100 ml.

*These Doses are only Indicative. Exact Dose may vary according to Crop Stage and Intensity of Pest infestation.

NAVBHARAT C-POWER

NAVBHARAT C-POWER Liquid calcium is primarily used to treat and prevent calcium deficiencies in humans, pets, and plants, offering faster absorption than tablets. It supports strong bones, teeth, muscle function, and nerve signaling in humans and animals, and prevents structural issues like blossom end rot in plants.

Packing: 1 Ltr, 500 ml, 250 ml, 100 ml.

*These Doses are only Indicative. Exact Dose may vary according to Crop Stage and Intensity of Pest infestation.



CHAMTKAR GOLD

PGR

CHAMTKAR GOLD is a seaweed extract provides all essential elements and nutrients for the balanced growth of crops.

Crop: All field crops, Vegetables, Orchard

Applied on : Stimulates the chlorophyll synthesis as well as new tissue generation. It also stimulates flowering and overall growth of plant. It develops taste, colour and quality of fruits

Packing: 1 Ltr, 500 ml, 250 ml, 100 ml

*These Doses are only Indicative. Exact Dose may vary according to Crop Stage and Intensity of Pest infestation.

PGR PRODUCTS

NAVBHARAT

NAVBHARAT is organic fertilizer made from seaweed that is used in agriculture to increase soil fertility and plant growth. It is ideal for preventing micronutrient deficiencies especially during intensive growth and production phases.

Crop : All field crops, Vegetables, Orchard

Applied On : Improves soil texture, Enhance Crop Resistance, improve root nutrient intake, Good source of essential nutrients.

Packing : 4 kg.

*These Doses are only Indicative. Exact Dose may vary according to Crop Stage and Intensity of Pest infestation.





Hindustan Biotech

Office : SCO 10, 8th Floor, Sushma Chandigarh Infinium,
Chandigarh Ambala Highway, Zirakpur-140603 (Punjab)

Customer Care No. : 07404906239

Email : info@hindustanbio-tech.com,

Website : www.hindustanbio-tech.com